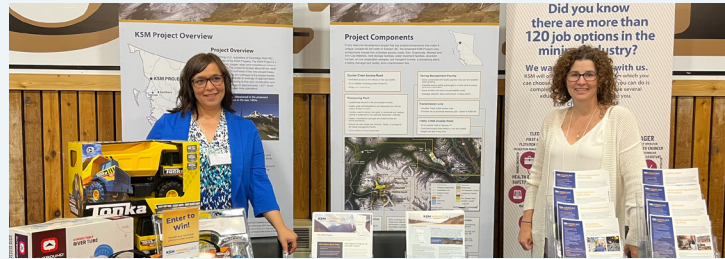


## Community Engagement

For over 14 years, one of our top priorities has been early, frequent, and transparent communication with the local communities and our Indigenous partners to share the latest project updates, solicit input and understand their needs and concerns to build a responsible and mutually beneficial Project. We continued our engagement activities this year, including:

### Attended Nisga'a business forum to share information about job options in the mining industry



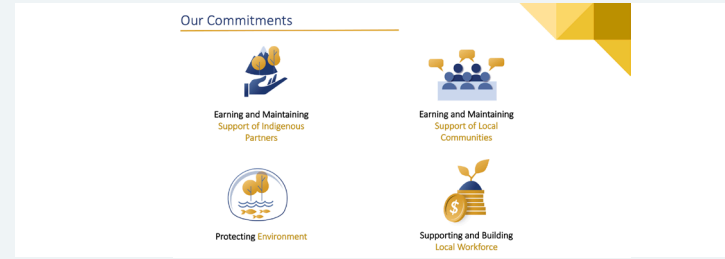
### Hosted leaders of the city of Terrace and Smithers for a tour of our KSM and Iskut Projects



### Opened a new community office in Terrace (100-4560 Lazelle Ave) to continue to share Project information



### Presentations to the City of Terrace, Smithers, the Regional District of Kitimat-Stikine, and the Village of Hazelton



### Hosted representatives of Tahltan Central Government and Nisga'a Lisims Government at our Iskut and KSM Projects



## Sponsorships and Donations

**\$1.3+ Million**

Sponsorships and Donations (since 2011)



**\$650,000+**

To 395+ Northwest BC students through the Seabridge Gold Bursary Program started in 2016



**\$400,000**

Coast Mountain College and former BC Aboriginal Mine Training Association



**Have a question or a comment?** - We are always looking at ways to improve our newsletter. Please feel free to write to us with a comment or a question. Subscribe to our email list to receive updates: [ksm\\_community@seabridgegold.com](mailto:ksm_community@seabridgegold.com)

## SEABRIDGE GOLD

1330 Main Street,  
Smithers, BC  
V0J 2N0  
T: 250.847.4704

100-4650 Lazelle Ave,  
Terrace, BC  
V8J 1R6  
T: 778.702.1888

812A Adela Street,  
Watson Lake, YT  
Y0A 1C0  
T: 867.536.2727

Follow us on social media:

@SeabridgeInc  
 @SeabridgeGold  
 Seabridge Gold Inc.  
[www.ksmproject.com](http://www.ksmproject.com)

## THE SEABRIDGE GOLD 2022 UPDATE



### Message from Ryan Hoel, Seabridge Gold's newly appointed Chief Operating Officer and Senior Vice President

2022 has been a successful year for Seabridge Gold and our KSM Project where we are investing \$150 million to undertake early-stage construction activities including:

- Releasing our inaugural

sustainability report detailing our approach towards integrating environmental sustainability and good governance into our business.

- Signing a facilities agreement with BC Hydro to provide green hydro-sourced electricity for construction activities at the KSM Project, reducing greenhouse gas emissions by 75%.
- Raising US \$225 million from Sprott Resource Streaming and Royalty

Corp and Ontario Teachers' Pension Plan in exchange for a KSM Silver Royalty.

- Releasing an updated Preliminary Feasibility Study (PFS) for the KSM Project which highlighted a more sustainable and profitable mining operation.
- Releasing a Preliminary Economic Assessment Study for a potential copper-rich underground mine (Iron Cap and Kerr deposits) at the KSM Project.

I would like to thank everyone who attended our virtual open house in May and am confident the information we shared helped to clarify the activities underway at the KSM Project.

Lastly, I would like to thank our Indigenous partners and the local communities of Northwest BC for their tremendous support and guidance on the KSM Project for the last 14 years to help us build a responsible Project.

## British Columbia & Yukon Project Facts & Updates

Seabridge Gold is a Canadian exploration and development company which has 100% ownership of four Projects in Canada (KSM Project, Iskut Project, 3 Aces and Courageous Lake) and one in the United States (Snowstorm Project):

### 1 KSM Project

The KSM Project is a proposed gold, copper, silver and molybdenum mine, located 65 km northwest of the town of Stewart, B.C. With the Environmental Assessment approved mine life in excess of 50 years, the Project has the potential to bring significant economic benefits and create multi-generation job opportunities in the region. The Project is expected to create 1,500+ onsite jobs during its five-year construction period and 1,400+ onsite jobs when in production.

### 2 Iskut Project

Located 110 km northwest of Stewart BC and about 40 km from the KSM Project, the Iskut Project includes the former gold Johnny Mountain Mine and Bronson Slope gold-copper deposit. The Project was obtained upon Seabridge Gold's acquisition of SnipGold Corp. in June 2016.

The Seabridge team has been conducting an exploration drill program at the Iskut Project, targeting gold and copper at Bronson Slope and Quartz Rise locations. We are also continuing the 12-million-dollar, multi-year reclamation project to close and reclaim the former Johnny Mountain Mine Site to its approved Closure and Reclamation Plan status of tundra habitat in cooperation with the Tahltan Nation.

This year, we were the recipient of the Jake McDonald Annual Mine Reclamation Award presented by the BC Technical and Research Committee on Reclamation, which recognized our success in voluntarily reclaiming the former Johnny Mountain Mine since 2016.

### 3 3 Aces Project

The 3 Aces Project is a gold exploration Project located in the southeast corner of Yukon between approximately 133 km and 164 km of the Nahanni Range Road, within the traditional territory of the Kaska Nation, near the Northwest Territories' border. This May, Seabridge signed a Contribution Agreement with Liard First Nation and in September, received a Class 4 Quartz Exploration Permit to conduct a gold-focused exploration program.



# Planned Early-stage Construction Activities at KSM Project

In 2021, Seabridge Gold started early-stage construction activities, which included building access roads, camps, and site preparation to responsibly advance the Project and to achieve the “substantially started” status by July 28, 2026. So far, we have invested 480 million+ on exploration, engineering and environmental work, and are planning to invest **another \$150 million (each) in 2022 and 2023** to advance the Project responsibly.

## Construction of Glacier Creek Fish Habitat Offset Program

**Purpose** - To create a functional aquatic and riparian habitat to support all freshwater life stages of Dolly Varden.



## Additional Site Preparation at Camp 9

**Purpose** - Once Completed, the camp will provide accommodation (year-round) for feasibility field work and support early-stage construction activities.



## Construction of the Treaty Creek, North Treaty Creek Access Road, and Bell-Irving River Bridge

**Purpose** - Improve Safety & Logistics; 33 km direct access road from Highway 37 to the Treaty Plant Site area.



## Construction of the Coulter Creek Access Road

**Purpose** - Improve safety and logistics; New departure point for KSM Mining for logistics flow into Mitchell Valley.



## Advance planning for Treaty Creek Terminal and Switching Station

**Purpose** - To connect KSM Project to BC Hydro's existing Northwest Transmission Line at BC Hydro's Treaty Creek Switching Station providing green power to the Project.



## Additional Early-stage Construction Activities

- Construction of Camp 11 to support work on the Treaty Creek Access Road
- Environmental monitoring of construction works
- Complete buildout of the Seabridge team to support the undertaking of expanded site-based activities



## What is the importance of undertaking early-stage construction activities?

It will allow Seabridge to obtain most of the critical data required to complete the Feasibility Study before a future construction decision for KSM can be made and will place the company in a stronger position to arrange the potential joint venture partnership.



## How will it Benefit local communities?

Early-stage construction activities will increase the flow of socio-economic benefits in local communities as Seabridge is committed to spending approx. 75 to 85% of the \$300 million budget in local communities with local vendors, qualified contractors, Indigenous partners and the local workforce.



## Here's what some of our contractors have to say about working with Seabridge Gold.

“ As a local contractor, we sincerely appreciate Seabridge's commitment to shop locally. We were very involved in their Terrace Office renovation and all contractors and supplies were sourced in Terrace.

-Laudo Botelho, Owner of Graydon Electrical Contracting Ltd.

”

“ Working with the KSM Environmental team on various projects including clearing the drill site, we know they have a strong commitment towards protecting the environment and safety. They always made us feel that we are part of the same team working towards achieving a common goal, and thanks to this peaceful and collaborative atmosphere, we safely completed the project before the deadline. This collaborative partnership also helped create a stronger sense of pride in a local company that only thrives towards the highest quality and shares the same value towards the environment.

Julien Dusseque, General Manager at Wild Timber Industries

”